

Chicken Coops

Beautifully Designed for Safety & Convenience



Beautifully Designed
for Safety & Convenience





Combination style

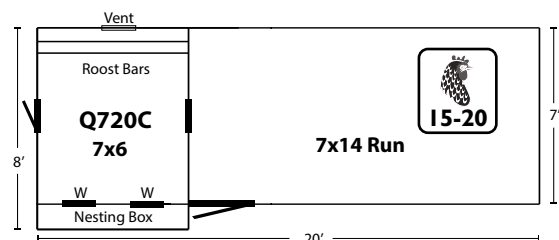
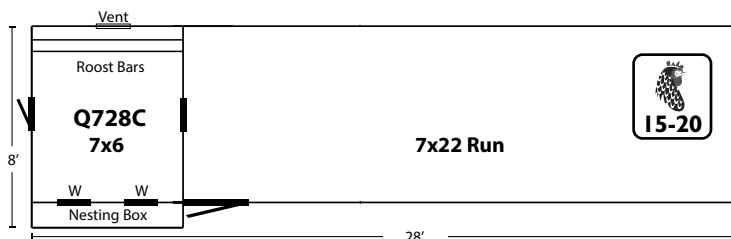
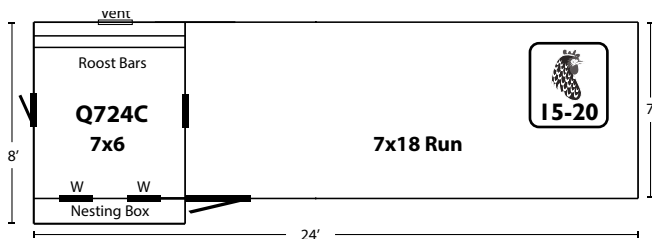
The combination style coop is defined by the coop and Run Area under the same roof. It's our most popular style as it provides the complete package for the chickens. Add our hydraulic wheel system and it becomes easy to move your coop to keep fresh grass available.

Combination Style Coop - Standard Features



7x28 Combination Q728C

- LP® Siding
- 7' x 22' Run Area
- 6' x 7' Chicken Coop Area
- 101" High
- 6 Nesting Boxes
- Red Paint
- Beige Trim
- Walnut Brown Shingles
- Two 18"x23" Windows





7x24 Combination Q724C

- Board and Batten Siding
- 7' x 18' Run Area
- 6' x 7' Chicken Coop Area
- 101" High
- 6 Nesting Boxes
- Natural
- Two 18"x23" Windows

Shown with Optional Black Metal Roof



7x20 Combination Q720C

- LP® Siding
- 7' x 14' Run Area
- 6' x 7' Chicken Coop Area
- 101" High
- 6 Nesting Boxes
- Navajo White Siding w/ Clay Trim
- Weathered Gray Shingles
- Two 18"x23" Windows



7x20 Combination Q720C

- Board and Batten Siding
- 7' x 14' Run Area
- 6' x 7' Chicken Coop Area
- 101" High
- 6 Nesting Boxes
- Cedar Stain
- Walnut Brown Shingles
- Two 18"x23" Windows

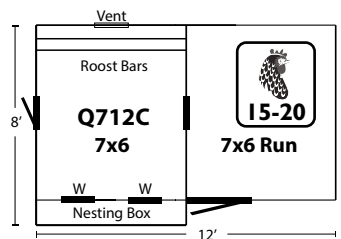
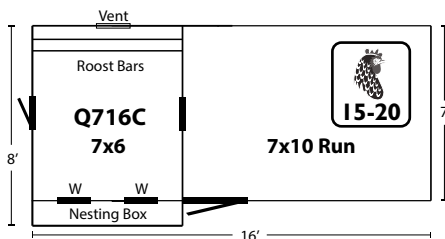


Combination Style

The combination style coop is defined by the coop and Run Area under the same roof. It's our most popular style as it provides the complete package for the chickens. Add our wheel system and it becomes easy to move your coop to keep fresh grass available.



Combination Style Coop - Standard Features



7x16 Combination Q716C

- Board and Batten Siding
- 7' x 10' Run Area
- 6' x 7' Chicken Coop Area
- 101" High
- 6 Nesting Boxes
- Cedar Stain
- Two 18"x23" Windows

Shown with Optional Metal Roof, Painted Trim and 1/2" x 1/2" Wire Mesh





7x16 Combination Q716C

- LP® Siding
- 7' x 10' Run Area
- 6' x 7' Chicken Coop Area
- 101" High
- 6 Nesting Boxes
- Clay Paint w/ Red Trim
- Weathered Gray Shingles
- Two 18"x23" Windows



TOP SELLER!



7x12 Combination Q712C

- Board and Batten Siding
- 6' x 7' Run Area
- 6' x 7' Chicken Coop Area
- 101" High
- 6 Nesting Boxes
- Rustic Cedar Stain
- Two 18"x23" Windows



Shown with Optional Green Metal Roof



7x12 Combination Q712C

- Duratemp® siding
- 6' x 7' Run Area
- 6' x 7' Chicken Coop Area
- 101" High
- 6 Nesting Boxes
- Red Paint w/ Red Trim
- Walnut Brown Shingles
- Two 18"x23" Windows



Combination Style

The combination style coop is defined by the coop and Run Area under the same roof. It's our most popular style as it provides the complete package for the chickens. Add our wheel system and it becomes easy to move your coop to keep fresh grass available.

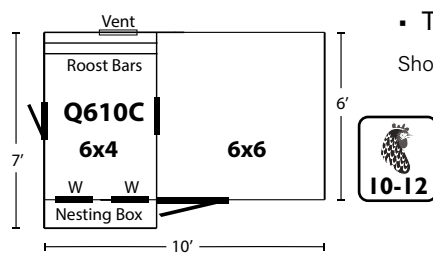
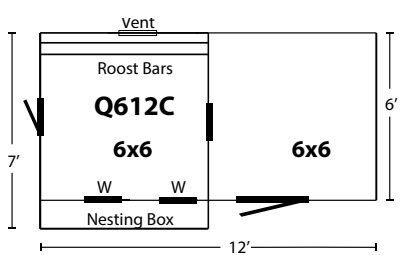


6x12 Combination Q612C

- LP® Siding
- 6' X 6' Run Area
- 6' X 6' Chicken Coop Area
- 103" High
- 6 Nesting Boxes
- Red Siding with White Trim
- Charcoal Shingles
- Two 18"x23" Windows

Shown with Optional Wire Over Window.

Combination Style Coop - Standard Features





6x12 Combination Q612C

- Board and Batten Siding
- 6' X 6' Run Area
- 6' X 6' Chicken Coop Area
- With Board and Batten Siding
- 103" High
- 6 Nesting Boxes
- Cedar Stain
- Walnut Brown Shingles
- Two 18"x23" Windows



6x10 Combination Q610C

- Board and Batten Siding
- 6' X 6' Run Area
- 4' X 6' Chicken Coop Area
- 101" High
- 4 Nesting Boxes
- Cedar Stain
- Weathered Gray Shingles
- Two 18"x23" Windows



6x10 Combination Q610C

- LP® Siding
- 6' X 6' Run Area
- 4' X 6' Chicken Coop Area
- 101" High
- 4 Nesting Boxes
- Red Siding with White Trim
- Charcoal Shingles
- Two 18"x23" Windows



Combination Style

The combination style coop is defined by the coop and Run Area under the same roof. It's our most popular style as it provides the complete package for the chickens. Add our wheel system and it becomes easy to move your coop to keep fresh grass available.

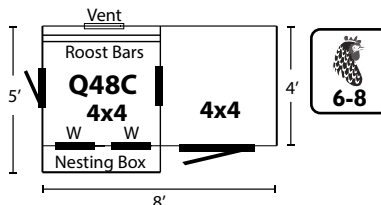
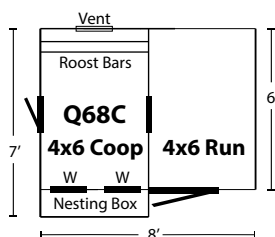


Combination Style Coop - Standard Features



6x8 Combination Q68C

- LP Siding
- 4' x 6' Run Area
- 4' x 6' Chicken Coop Area
- 101" High
- 4 Nesting Boxes
- White Siding with Black Trim
- Charcoal Shingles
- Two 18"x23" Windows





6x8 Combination Q68C

- Board and Batten Siding
- 4' x 6' Run Area
- 4' x 6' Chicken Coop Area
- 101" High
- 4 Nesting Boxes
- Natural Stain
- Two 18"x23" Windows

Shown with Optional bronze Metal Roof.



4x8 Combination Q48C

- LP® Siding
- 4' x 4' Run Area
- 4' x 4' Chicken Coop Area
- 94" High
- 4 Nesting Boxes
- Buckskin Siding with Hunter Green Trim
- Forest Green Shingles
- Two 18"x23" Windows



4x8 Combination Q48C

- Board and Batten Siding
- 4' x 4' Run Area
- 4' x 4' Chicken Coop Area
- 94" High
- 4 Nesting Boxes
- Natural Stain
- Charcoal Shingles
- Two 18"x23" Windows



Combination style

The combination style coop is the defined by the coop and Run Area under the same roof. It's our most popular style as it provides the complete package for the chickens. Add our wheel system and it becomes easy to move your coop to keep fresh grass available.

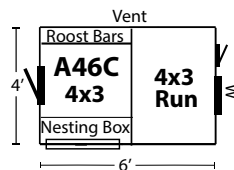
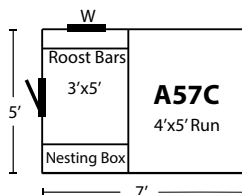


Combination Style Coop - Standard Features



5x7 A-Frame Combination A57C

- LP Smart Side Siding
- 73" High - 14" off Ground
- 3 Nesting Boxes
- 4' x 5' Run
- 3' x 5' Chicken Coop Area
- White Paint with White Trim
- Charcoal Shingles
- One 12"x18" Windows





10x12 Quaker Coop Q1012

- Board & Batten Siding
- 12 Nesting Boxes
- Cedar Stain
- Walnut Brown Shingles
- Three 24"x36" Windows



7x12 Quaker Coop Q712

- Duratemp® Siding
- 101" High - 8" off Ground
- 12 Nesting Boxes
- Clay siding with Beige Trim
- Weather Gray Shingles
- Three 24"x27" Windows



TOP SELLER!



7x12 Quaker Coop Q712

- Board and Batten Siding
- 101" High - 8" off Ground
- 12 Nesting Boxes
- Rustic Cedar Stain
- Three 24"x27" Windows

Shown with Optional Black Metal Roof, Gable Vents and Wire Over the Windows.



Quaker Style

The Quaker henhouse series has a distinctive roof line overhang that is inspired by century old barn styles. This style maximizes head space in the interior.

Quaker Style Coop - Standard Features



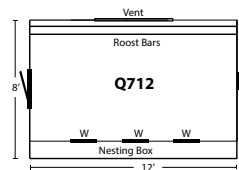
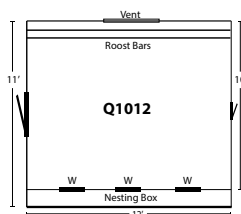
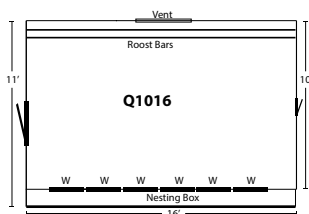
10x16 Quaker Coop Q1016C

- LP Siding
- 12 Nesting Boxes
- Red Paint, Red Trim
- Black Metal Roof
- Four 24"x36" Window

Shown w/2 Extra Windows



10' wide coops have 6'-7' high walls, 7' wide coops have 5'-6' high walls





Quaker

The Quaker henhouse series has a distinctive roof line overhang that is inspired by century old barn styles. This style maximizes head space in the interior.

Quaker Style Coop - Standard Features



NESTING BOXES



ROOST



5/8" LP FLOORING



TECH SHIELD ROOFING SHEATHING



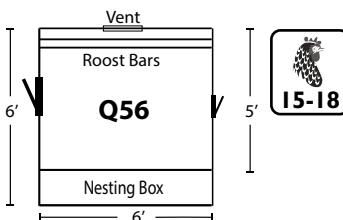
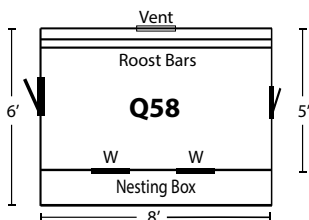
GAS PROP ON NESTING LIDS



5x8 Quaker Q58

- Board and Batten Siding
- 8 Nesting Boxes
- Cedar Stain
- Two 18"x23" Windows

Shown with Optional green Metal Roof.





TOP SELLER!



5x8 Quaker Q58

- LP siding
- 8 Nesting Boxes
- Clay Siding
- Hunter Green Trim
- Charcoal Shingles
- Two 18"x23" Windows

Shown with Optional green Metal Roof



5x6 Quaker Q56

- LP Siding
- 94" High - 8" off Ground
- 6 Nesting Boxes
- Red Siding with White Trim
- Weather Gray Shingles
- Two 18"x23" Windows

Shown with Optional wire over windows.



5x6 Quaker Q56

- Board and Batten Siding
- 94" High - 8" off Ground
- 6 Nesting Boxes
- Brown Cedar Stain
- Weather Gray Shingles
- Two 18"x23" Windows



4x8 Quaker Q48

- Board and Batten Siding
- 82" High - 14" off Ground
- 8 Nesting Boxes
- Natural Stain
- Two 18"x23" Windows

Shown with Optional red Metal Roof, 4 wheels with steering handle, wire over windows, and clean-out lid.



4x6 Quaker High Side Q46H

- Board and Batten Siding
- 94" High - 8" off Ground
- 6 Nesting Boxes
- Cedar Stain
- Williamsburg Slate Shingles
- Two 18"x23" Windows

Features Higher sidewall than standard 4x6.



4x6 Quaker High Side Q46H

- Duratemp® Siding
- 94" High - 8" off Ground
- 6 Nesting Boxes
- Buckskin Siding with Green Trim
- Two 18"x23" Windows

Shown with Optional green Metal Roof and wire over windows.



Quaker

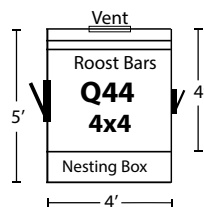
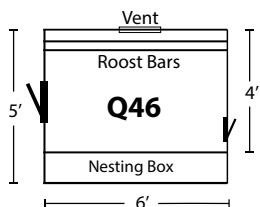
The Quaker henhouse series has a distinctive roof line overhang that is inspired by century old barn styles. This style maximizes head space in the interior.

Quaker Style Coop - Standard Features



4x6 Quaker Q46

- LP Smart Side Siding
- 81" High - 14" off Ground
- 6 Nesting Boxes
- Lt Gray Paint with White Trim
- Weather Gray Shingles
- Two 18"x23" Windows





4x6 Quaker Q46

- Board and Batten Siding
- 81" High - 14" off Ground
- 6 Nesting Boxes
- Natural Stain
- Bronze Metal Roof
- Two 18"x23" Windows

Shown with Optional Metal Roof and clean out lid.



4x4 Quaker Q44

- LP Smart Side Siding
- 80" High - 14" off Ground
- 4 Nesting Boxes
- Buckskin Paint with White Trim
- Charcoal Shingles
- One 18"x23" Window

Shown with Optional Wire Over Window.



4x4 Quaker Q44

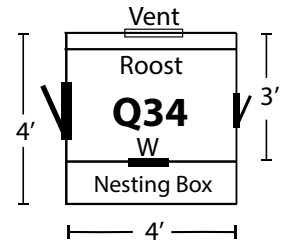
- Board and Batten Siding
- 80" High - 14" off Ground
- 4 Nesting Boxes
- Cedar Stain
- Cedar Shingles
- One 18"x23" Window



3x4 Quaker

- Board and Batten Siding
- 70" High - 14" off ground
- 4 Nesting Boxes
- Natural Stain
- Walnut Brown Shingles
- One 12"x18" Window

Quaker



3x4 Quaker

- LP® Siding
- 70" High - 14" off Ground
- 4 Nesting Boxes
- Red Siding with White Trim
- Weather Gray Shingles
- One 12"x18" Window

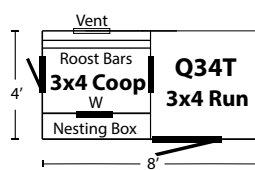
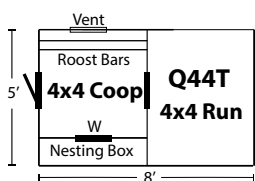


Tractor

The Tractor style henhouse is a conveniently movable cage and run combo. This allows you to keep the chickens on fresh grass, by easily moving it on to the next spot.



Tractor Style Coop - Standard Features



3x4 Quaker Tractor Q34T

- LP Siding
- 75" High - 14" off Ground
- 4 Nesting Boxes
- 2 Wheels w/ Wheelbarrow Handles
- 3' x 4' Coop Area, 4x4 Run Area
- One 12"x18" Window

Shown with Optional Red Metal Roof, Butternut Urathane Stain and Wire Over Window.





4x4 Quaker Tractor Q44T

- LP Siding
- 75" High - 14" off Ground
- 4 Nesting Boxes
- 2 Wheels with Wheelbarrow Handles
- 4' x 4' Coop Area, 4'x5' Run Area
- Navajo White Siding with Buckskin Trim
- Walnut Brown Shingles
- One 12"x18" Window



3x4 Quaker Tractor Q34T

- Board and Batten Siding
- 75" High - 14" off Ground
- 4 Nesting Boxes
- 2 Wheels w/ Wheelbarrow Handles
- 3' x 4' Coop Area, 4x4 Run Area
- Cedar Stain
- Walnut Brown Shingles
- One 12"x18" Window



3x4 Quaker Tractor Q34T

- LP Siding
- 75" High - 14" off Ground
- 4 Nesting Boxes
- 2 Wheels with Wheelbarrow Handles
- 3' x 4' Coop Area, 4x4 Run Area
- Red Siding with White Trim
- Charcoal Shingles
- One 12"x18" Window

Interiors Quaker Style



Interior view of Q612C (page 13)



Interior view of chicken area of Q58 (page 20,21)



Interior view of chicken area of Q58 (page 20,21)



Interior view of Q46 (page 24,25)



Interior view of chicken area of Q712 (page 19)

Compare the Interiors



Quaker



Interior View Of Roost, Ventilation Lid And Chicken Door- Q34t & Q44t (Pages 28-29)

Dutch



Interior View Of Roost, Windows, And Chicken Door Dutch Models (pages 40-43)

Quaker 7 Ft. Wide



Interior View Of 7 ft. Wide Quaker Coop (Page 19)

Quaker 10 Ft. Wide



Interior View Of 10 ft. Wide Quaker Coop (Page 18)



Compare the Interiors

Quaker

Interior view
Q34T & Q44T (pages 28-29)



Dutch

Interior view
Dutch models (pages 40-43)



Lean-To

Interior view - L53



A-Frame

Interior view - A46 (page 36)



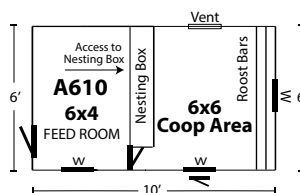
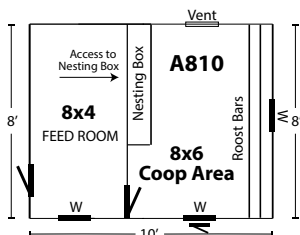


A-Frame

The A-Frame is a classic style favored by many. With simple straight lines and beautiful trim, it has its own touch of class.



A-Frame Style Coop - Standard Features



8x10 A-Frame A810

- LP® Siding
- 101" High - 4" off Ground
- 8 Nesting Boxes
- 4' x 8' Feed Room
- 6' x 8' Chicken Area
- Red Siding with Beige Trim
- Cedar Shingles
- Three 24"x27" Window

Shown with Optional Painted Doors.





20-24



8x10 A-Frame A810

- Board and Batten Siding
- 101" High - 4" off Ground
- 8 Nesting Boxes
- 4' x 8' Feed Room
- 6' x 8' Chicken Area
- Rustic Cedar Stain
- Walnut Brown Shingles
- Three 24"x27" Windows

Shown with Optional heavy duty wheel system.



14-18



6x10 A-Frame A610

- Tongue and Groove Siding
- 101" High - 4" off Ground
- 6 Nesting Boxes
- 4' x 6' Feed Room
- 6' x 6' Chicken Area
- Cedar Stain with Green Trim
- Forest Green Shingles
- Three 24"x27" Windows

Shown with Optional Painted Trim.



14-18



6x10 A-Frame A610

- LP® Siding
- 101" High - 4" off Ground
- 6 Nesting Boxes
- 4' x 6' Feed Room
- 6' x 6' Chicken Area
- Buckskin Siding with White Trim
- Weather Gray Shingles
- Three 24"x27" Windows



4x6 A-Frame A46

- LP® Siding
- 79" High - 14" off Ground
- 6 Nesting Boxes
- Light Gray Siding with White Trim
- Nickel Gray Shingles
- One 18"x23" Window



4x4 A-Frame A44

- LP® Siding
- 65" High - 14" off Ground
- 4 Nesting Boxes
- Beige Siding with Chestnut Trim
- Walnut Brown Shingles
- One 12"x18" Window



4x4 A-Frame A44

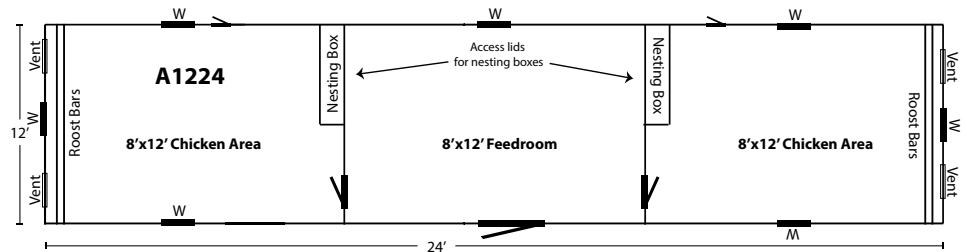
- Board and Batten Siding
- 65" High - 14" off Ground
- 4 Nesting Boxes
- Rustic Cedar Stain
- Weather Gray Shingles
- One 12"x18" Window



12x24 A-Frame A1224

- LP[®] Siding
- Red Siding with White Trim
- 7 windows 24x36
- 1 single door
- 24 Nesting Boxes
- 2 chicken doors
- 2 8x12 chicken areas
- 1 8x12 feed room
- 4 vents

Shown with Optional White Metal Roof.



Common Problems

with backyard chickens, and how to fix them.

• Broody Hens who refuse to leave the nest

1. Try to break the habit by removing eggs as soon as they are laid.
2. Keep her away from the Nesting Boxes for approximately a week.
3. Nest inserts can be used which cause eggs to roll away as soon as they are laid.

• Blocked or Sour Crop

1. Keep poultry grit readily available at all times to help healthy digestion.
2. Try feeding her some oil and massaging several times a day to loosen blockage.
3. Garlic and natural yogurt can also be tried.

• Hen Pecking

1. Can be caused by boredom. Add items for distraction: a head of cabbage, greens, or hang a Peck a Block in the run.
2. Overcrowding can cause pecking, keep flock at the recommended size for your house.
3. If one hen seems to be being picked on and blood is being drawn, she must be removed as blood only encourages more pecking. Anti peck products can also be applied to the picked on hen to try to break the habit.





Interiors A-FRAME Style



Interior view of A46 (page 36,37)



Interior view of chicken area of A44 (pages 37)



Interior view of chicken area of A610 & A810 (pages 34-35)



Feed room of A1224 (page 38)



Chicken Area of A1224 (page 38)



Lean-To

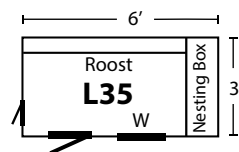
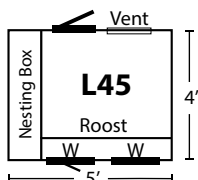
The Lean -To is a lovely little space saver. It is designed to allow you to set it against a building or wall. Find the size that is right for you.

Lean-To Style Coop - Standard Features



4x5 Lean-To L45

- Board and Batten Siding
- 82" High - 14" off Ground
- 4 Nesting Boxes
- Natural Stain
- Cedar Shingles
- Two 18"x23" Windows





4x5 Lean-To L45

- Board and Batten Siding
- 82" High - 14" off Ground
- 4 Nesting Boxes
- Clay Siding with Beige Trim
- Weather Gray Shingles
- Two 18"x23" Windows



3x5 Lean-To L35

- Duratemp® Siding
- 65" High - 12" off Ground
- 3 Nesting Boxes
- Avocado Siding with Beige Trim
- Weather Gray Singles
- One 12"x18" Window

Shown with Optional 4 wheels with handle.



3x5 Lean-To L35

- Tongue and Groove Siding
- 65" High - 12" off Ground
- 3 Nesting Boxes
- Cedar Stain with Green Trim
- Forest Green Shingles
- One 12"x18" Window

Shown with Optional Painted Trim.

OPTIONS

STANDARD FEATURES

Paint or Stain
Keyed Entry Door
Chicken Door
Chicken Ramp

Nesting Boxes
Gas Prop on
Nesting Box Lids
Roosting Bar

Vent Lid or Vent
(except for L35)
Window with Screen
Asphalt Shingles
Aluminum Drip Edge

5/8 LP Flooring
w/10 year warranty
P.T. Legs and Runners
L.P Tech Shield Roof
Sheathing

SIZE & STYLE

Decide on the number of chickens you would like to have. Each coop has a number on the chicken silhouette that will tell you the recommended amount of chickens for that coop.

Note: Chicken Coop sizes do not include outside Nesting Boxes.



Quaker

Combination

Tractor

Lean-to

A-Frame

COLORS

Note: Actual colors may vary from printed samples.

PAINT



White



Navajo



Cream



Beige



Buckskin



Chestnut



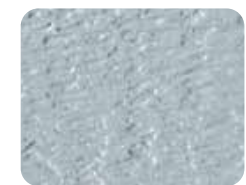
Clay



Lt. Gray



Dark Blue



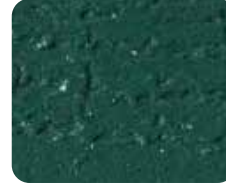
Light Blue



Red



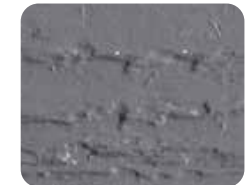
Black



Hunter Green



Avocado



Dark Gray

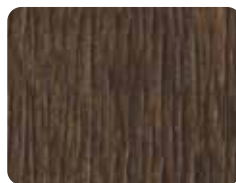
STAIN



Cedar



Brown Cedar



Mushroom



Natural



Rustic Cedar

TRIM

Here are a few of our favorite color/stain/trim combinations.

LP® trim color is standard.
Board and batten trim color is optional.
Tongue and groove trim color is optional.



Shown Here:
Light Gray Siding with White Trim



Buckskin Siding with Green Trim



Buckskin Siding with Red Trim



Red Siding with Beige Trim



Cedar Stain with White Trim



Navajo White Siding with Buckskin Trim



Red Siding with White Trim

ROOFING OPTIONS

CEDAR SHAKE
(Optional)



SHINGLES
(Standard)



Charcoal



Forest Green



Nickel Gray



Walnut Brown



Weather Gray

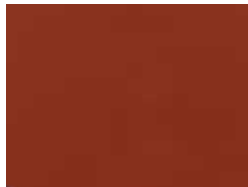


Cedar

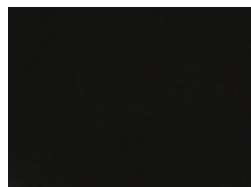


Williamsburg Slate

METAL
(Optional)



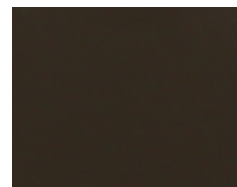
Red



Black



Green



Bronze



White

URETHANE
Stain Colors
(Optional)



Butternut



Chestnut Brown



Natural Teak



Red Wood

Note: Urethane colors are only available on LP Siding.

INTERIOR OPTIONS



Electric Package - Switch / Outlet / Lights
Extension Cord Hookup



Insulated Ceiling
Standard on Metal Roof option



Epoxy Floor



Wire over window

ADD A FEEDROOM TO YOUR COOP

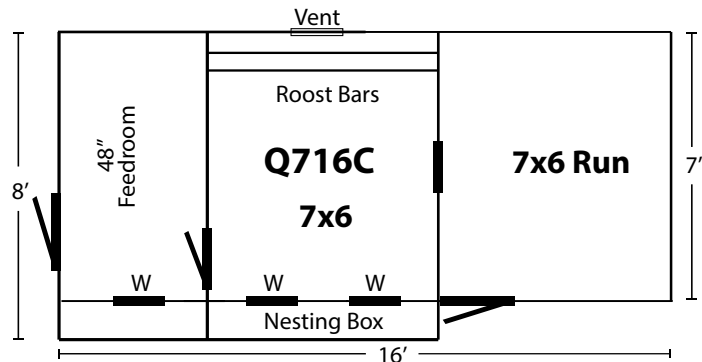
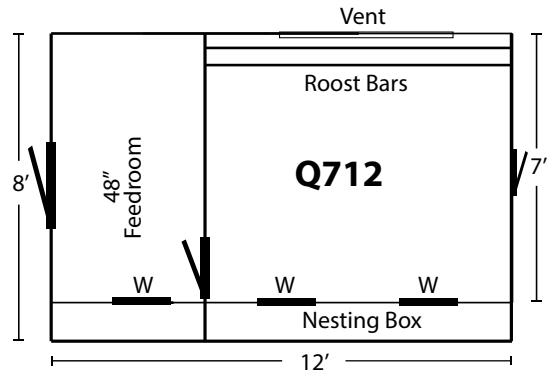
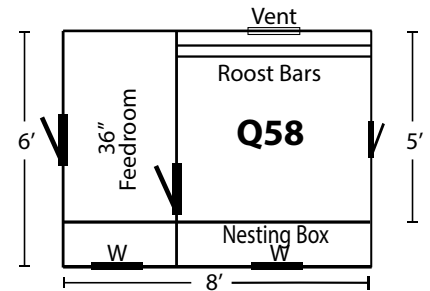


Adding a feedroom to your coop makes caring for your chickens so much easier! No more hauling feed and supplies - you can have them inside an attached room!

Feedroom Layout Ideas



The space where the nesting boxes are in the coop continues through the feedroom. This allows for extra storage space in the feedroom.



CHOOSE A LITTER TRAY



LITTER TRAY

covering whole floor
(requires clean out lid)



CLEAN-OUT LID FOR LITTER TRAY SHOWN

Available for the following:

D46	L45	A57C
Q34	L35	A46C
D44	D44 ?	Q44T
A46	Q341	
A44	D48	

LITTER TRAY

covering under roost bars only
(requires clean out lid)



Clean-Out Lid For Litter Tray Shown

Available for the following:
(and all large models)

Q712	A80	Q716C
Q58	A60	Q718C
Q56	Q712C	Q720C
Q46H	Q612C	Q722C
Q46	Q610C	Q724C
D66	Q68C	Q726C
Q44	Q48C	Q728C
A124	Q714C	Q732C

WHEEL OPTIONS



FOUR WHEELS WITH HANDLE

Available on Models:

Q44, L35, D44, A44, L45



FOUR WHEELS WITH STEERING HANDLE

Available on Models: Q58, Q56, Q46H, Q46, Q48, Q48C, D66, D48, D46, L45



FOUR WHEELS WITH STEERING HANDLE,

Heavy Duty, Available on models:

Q712, A80, A60, A812, A814, A816, Q714, Q718



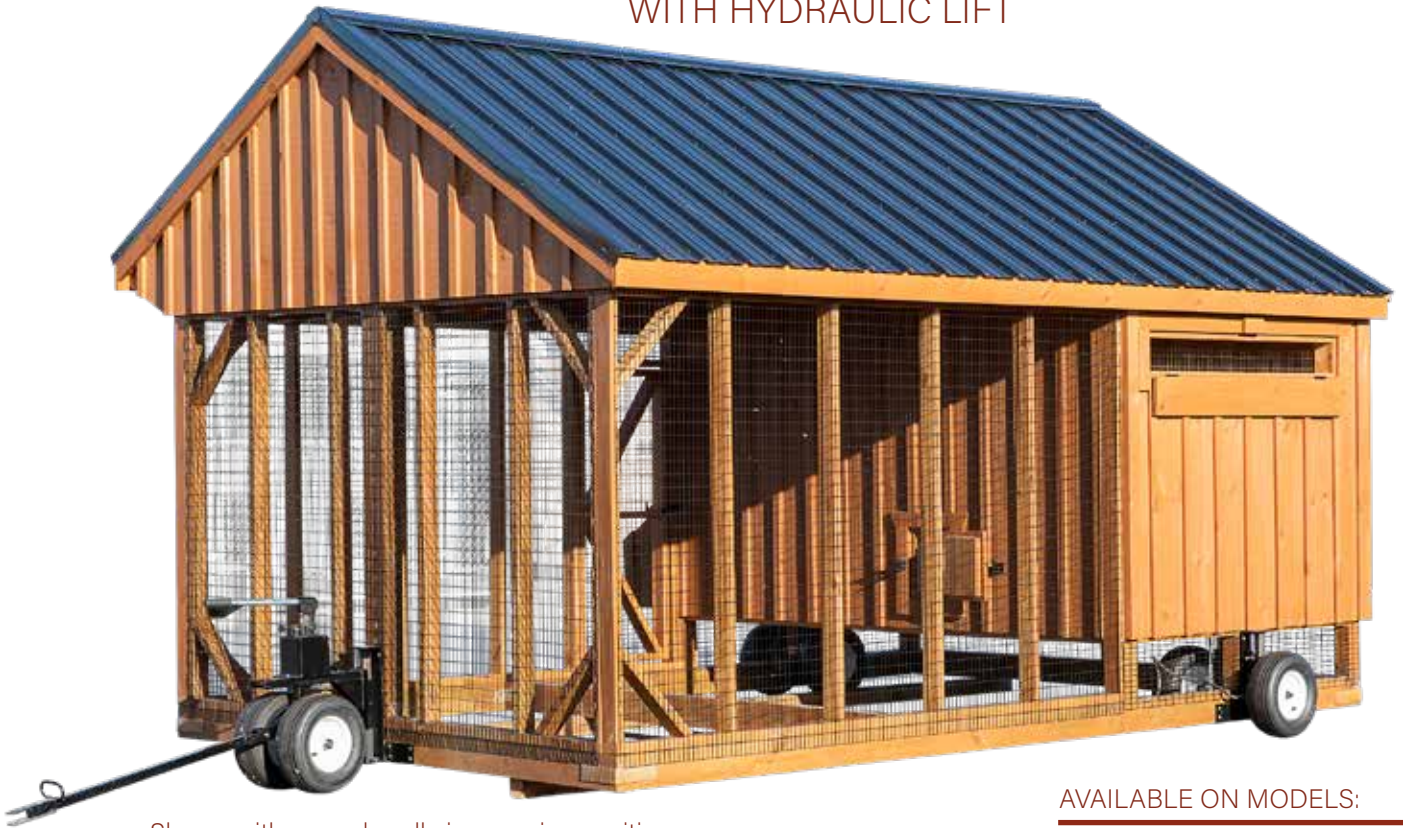
The Wheel Lift Lever is standard on all tractor models. also available on models: A57C, A46C

Wheel Lift Lever Kit Available for all runs.



HEAVY DUTY WHEEL SYSTEM

WITH HYDRAULIC LIFT



Shown with pump handle in pumping position.

Shown with pump handle in storage position. When using the lift, insert handle into the pumping mechanism. The lift can elevate the coop up to 6 inches.

AVAILABLE ON MODELS:

Q610C Q68C
Q612C Q714C
Q716C Q718C
Q720C Q728C
Q732C Q1016C
Q1018C

